

Volume 6 |
Issue 4

April 2025

Southern African Institute of Forestry



Delivering a professional service to forestry

Southern African Institute of Forestry, Postnet Suite 329, Private Bag X4, Menlopark, 0102
www.saif.org.za, saif@mweb.co.za

Contents:

1. Editorial: Autumn Season (p.1)
2. From The President's Desk : Nothing is certain but death, taxes (and tariffs) by Bruce Talbot (p.2)
3. Lecturer position in FABI on Data Science and AI related to plant health and productivity (p.3)
4. Reflections from a road trip by Rob Thompson (p.4)
5. Southern Forests – highlights for 2024 by Dave Everard (p.6)
6. Welcoming Dr. Ratsodo Phillip Tshidzumba as SAIF Branch representative for Mpumalanga (p.7)
7. Ligna / Elmia 2025 (p.7)
8. Sappi Southern Africa launches 2024 Corporate Citizenship Report (p.8)
9. NMU Researcher Sheds Light on Which Plants Fuel Wildfires and How To Protect Your Home(p.9)
10. Forests, Trees and Livelihoods (p.10)
11. Protected Tree Species : *Widdringtonia schwarzii* (p.11)
12. Dendrological Society of S.A. (p.12)
13. Logging on / Forestry in Focus (p.13)
14. The 36th Annual Meeting of the Tree Protection Co-operative Programme (TPCP)/ Woodex for Africa (p.14)
15. SAIF Contact details (p.15)
16. Birthdays : April and May (p.16-17)
17. SAIF Handbooks for Sale (p.18)

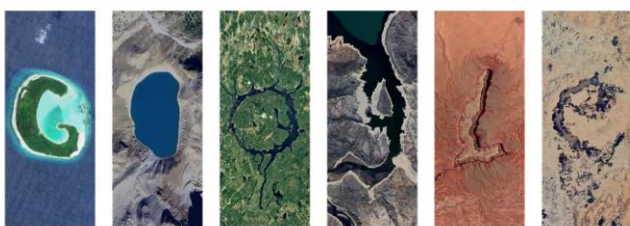
Editorial

Autumn season

We are already more than 30% through 2025 and one can only say “hold on tight and buckle up” as it is unlikely to slow down as we advance further in 2025! In the month of April, we celebrated “Earth Day” on the 22nd of April 2025. I questioned the relevance of yet another dedicated day, for us who work in the forest and forest products industry. I listened to a short interview with well-known Dave Pepler over the radio on Earth Day. Dave started his illustrious career as a forester for those who didn't know. Dave then mentioned a few things on the theme of Earth Day, where I believe we already make a contribution and a difference. One of the recommendations is to bike(cycle) more and drive less. Some others include to “reduce, reuse and recycle” and ‘plant a tree’ which we certainly do. In short, we can actually support all of the objectives (see Earth Day Infographic on page 7).

Not only did one of our stalwart members Georg von dem Bussche celebrate his 87th birthday on the 13th of April, but he also received special recognition as honorary member of the Dendrological Society of South Africa. Congratulations to Georg with this achievement.

In this edition apart from the contributions by our president Bruce Talbot and Rob Thompson, you will also be able to read about the current status of the SAIF flagship publication, Southern Forests as well as the Sappi Southern Africa 2024 Corporate Citizenship Report and news from the annual meeting of the Tree Protection Co-operative Program and other upcoming local and international events.



Earth Day , 22 April 2025

<https://www.genevaenvironmentnetwork.org/events/international-day-of-forests-2025>



From The President's Desk **Nothing is certain but death, taxes (and tariffs)**

By Bruce Talbot

Forestry has to weather many kinds of storms. The turmoil created both in politics and in the industry by the proposed 0.5% VAT hike (which has just been called off) leaves one wondering if these kinds of decisions can't be dealt with in a different way – perhaps first get agreement then publicize these ideas. But no, countless hours and procedures must be put in place, prices renegotiated, accounting systems adjusted, revision of balance sheets and earnings projections, etc., only to find that the whole process has been revoked and it is back to business as usual. Sleepless nights for contractors and management alike, many of whom are SAIF members. Our industry has had to deal with almost every conceivable risk manifesting itself in the past couple of years. Hurricanes, typhoons, fires, floods, snow, pests, infrastructure collapse, and political unrest are some of the other things that keep our sector awake at night. These are mostly natural phenomena that a sector can bring themselves to accept as part of the game, to some extent at least. President Trump on the other hand, seems to delight in disruption. Thirty-percent tariffs on and off overnight. One shudders to think how the economies of the world have been affected and how long we will with the ripples. Depending on the source, figures of between 3 and 4 trillion US\$ were wiped from the US stock market on a single day. A trillion has 12 zeros, one gets despondent just writing them out numerically, let alone multiplying them with our conversion rate.

Nevertheless, this all ended in a massively positive head-nod to our sector, something like the recognition given by our own government during the Covid lockdown, even if was mainly aimed at the Canadian industry. While the handful of people and sheep on the Falkland islands were being slapped with massive tariffs, Mr Trump gave forestry industries of the world the all clear – an almost complete waiver of tariffs on wood and wood products being imported into the USA. This is, once again, clear recognition that forestry, wood and wood products represent a strategic resource and an essential commodity. We are up there on the list with diamonds, gold, oil and coal. A few examples of descriptions of wood-based products exempted by way of example (from a list of many dozen others):

- Coniferous wood in the rough whether or not stripped of bark or sapwood, or roughly squared, treated with preservatives
- Non-coniferous wood in the rough whether or not stripped of bark or sapwood, or roughly squared, treated with preservatives
- Pine wood in the rough/roughly squared, the smallest dimension greater than or equal to 15 cm, not treated with preservatives
- Pine wood in the rough/roughly squared, the smallest dimension less than 15 cm, not treated with preservatives

The full list of categories, which makes for interesting reading, can be found at <https://www.whitehouse.gov/wp-content/uploads/2025/04/Annex-II.pdf>, starting around page 23.

While it was Benjamin Franklin who stated that the only certainty in life was death and taxes, Mark Twain apparently came up with the above, viz. that there are 3 kind of lies; Lies, Damned Lies, and Statistics. We are not dealing with lies or damned lies here, but our sector was fortunate to have two sets of statistics on the general state of things published in the past month or so. The first came from DFFE, and the second from Statistics SA. It is always useful to have updated numbers to work from, especially for those of us that are once-removed from the industry, and these reports form a reasonable basis for that. The reader should bear in mind though that both institutions apparently faced some challenges in compiling the reports. It is never easy to extrapolate accurately from a limited number of respondents in such surveys, and there is evidence of this throughout. This is also acknowledged in the summaries and our readers are cautioned to critically examine the context and extent of the numbers being presented in either of the reports. There are many useful nuggets but also a few areas that appear to have been concluded on a thinner basis, as well as one or two tables whose figures are difficult to interpret at all.

The DFFE Annual report can be downloaded here :

https://www.dffe.gov.za/sites/default/files/reports/research/forestry/annualreport_commercialtimber_resources_primaryroundwoodprocessing2019to2020.pdf



The Statistics SA report, which deals mainly with Finances, Details of purchases and sales of goods and services, as well as Employment in: *Forestry, logging and related services industry, 2023* can be downloaded here

https://www.statssa.gov.za/?page_id=1854&PPN=12-00-00

Finally, a word of welcome to our two new Branch chairs:

- Mpumalanga Branch Chair: Dr Ratsodo Phillip Tshidzumba, from the University of Mpumalanga
- Western Cape Branch Chair: Dr Justin Erasmus, University of Stellenbosch

A big thank you to both gentlemen for agreeing to serve the SAIF for the coming period. More information on Drs. Tshidzumba and Erasmus can be found on the recently launched SAIF LinkedIn page, <https://www.linkedin.com/in/southern-african-institute-of-forestry-b645a335a/>. Please follow us there to stay up to date on developments in SAIF and the Southern Forests journal if you don't already do that.

Wishing you all well as we move into the month of May.

Bruce Talbot

+++++++

Lecturer position in FABI on Data Science and AI related to plant health and productivity

UP Posting - Academic

Department of Forestry and Agricultural Biotechnology Institute (FABI) Lecturer

In pursuit of the ideals of excellence and diversity, the University of Pretoria wishes to invite applications for the following vacancy.

The University of Pretoria's commitment to quality makes us one of the top research Universities in the country and gives us a competitive advantage in international science and technology development.

This is a Full-Time appointment

Enquiries : Mr T Moodley, Tel: (012) 420 2108 for application-related enquiries, and Prof B Slippers, Tel: (012) 420 2463 for enquiries relating to the post content.

The incumbent's responsibilities will include:

- Joining a world class team of researchers working in the field of plant health and productivity in the Forestry and Agricultural Biotechnology Institute (FABI);
- Associating with the Department of Computer Science and the African Institute for Data Science and AI (AfriDSA);
- Undertaking goal directed research in the field of Data Science and AI related to plant health and productivity and supervising postgraduate students in these fields;
- Contributing to undergraduate and honours teaching in the associated Department;
- Participating as a member of the FABI Management Committee to advance the goals of the institute;
- Participating in the activities of other research teams within FABI and contributing to the effective operation of the Institute;
- Engaging with a broad range of stakeholders linked to the Institute including other UP collaborators, international collaborators, local government and industry (including extension), as well as funding organisations that provide external support for FABI's research.

Minimum Requirements:

- A relevant PhD degree;
- Teaching and research experience with an established publication record in leading international journals that demonstrates research at a high international standard;
- Specialisation in the field of data science and AI, related to plant health, sensor technologies or related fields with applications relevant to Forestry and Agriculture;
- Evidence of the ability to gain an NRF rating in the near future.

Applicants are requested to apply online at www.up.ac.za, and follow the link: Careers@UP

Closing Date : 16 May 2025



Reflections from a road trip

By Rob Thompson

I have spent a good deal of time travelling, by road, to and from the Cape during March 2025.

Given a keen interest in matters ecology (as a forester go figure) and a strong contention that humankind has already pushed the ecological clock to well past midnight, these road trips drove home to me (seriously bad pun), once again, the fact that homo sapiens certainly cannot claim the alpha intellectual spot on the ladder of life-forms currently existing on our planet.

At this point, I should declare that my bakkie is just that. A bakkie with no connectivity supportive bells and whistles. A major benefit of a long road trip in my bakkie therefore, is that it tends to force one into a mobile device / social media hiatus. All that one can really do is listen to the radio (when there is clear reception) and observe fellow life forms going about their daily activities. Effectively, one sees one surrounds without the veneer of gratuitous influence that social media applies to the life experience.

On the radio one listens to the narrative of world events playing out. It all sounds like a childish story of bullies in a sandpit, otherwise known as Earth. That same earth that sustains us all.

The story unfolding is loosely along the following lines: One long standing bully pushes his way into his neighbour's spot and is met with unexpected and fierce resistance from his neighbour and friends. He feels he is being Put-In a difficult position. While this is happening another new bully in a major part of the sandpit announces that he is not going to play with or help anyone else without a tariff. This he advertises as his Trump card. He has a rich friend assisting him (when he is not building cars that no-one buys) who understands that he Musk do as he is told. Both are very friendly with the long-standing bully which fact worries many in the sandpit. Despite these obvious relationships, some outspoken (and less far thinking) individuals in our part of the sandpit shout insults at the new bully from a distance and because of this the new bully refuses to give us any more spending money.

The long-standing bully, losing patience with his neighbour, announces that he has a bomb that he will use to destroy his neighbour. His neighbour tells him to bring it on and the new bully not seeming to mind

this announcement, slaps his car building buddy playfully on the back.

Clever guys in all parts of the sandpit are concerned knowing that the bomb in question will certainly destroy the resistant neighbour, as well as the rest of the sandpit! Our guys don't think about any of this too deeply and continue to tease the big bully with threats of calling parts of our pit names that the bully doesn't like and openly inviting the big bully's archenemies to parties and chats. Aluta continua...

This story has all the elements of a fantastic fantasy bedtime story ... but it is sadly actually very real and threatening!

Back to the road trip. Anyone driving to and from the Cape, and despite the level of technological advances of the vehicle being driven, will notice the incredible number of trucks (and cars) on the road. Let's however talk about the road for a minute. The main route, north to south, replicates the original historical route used (by and large) by the original pastoralists, traders, adventurers, settlers, wagon bound refugees and all other migrant folk traveling the length of our vast country. In those days, the route carried the essentials towards the sustention of life, water, rations, essential equipment, camp gear et al. A trip was undertaken based on utmost necessity only, and great care taken to engineer absolute efficiency of effort in terms of what and who was transported.

OK, let's go back to the trucks and cars now. There are thousands of them. Almost every car carries only one person. The extensive informal convoys of heavily laden trucks appear to be conveying all of the essentials of our current wasteful and destructive lifestyle. One sees car carriers carrying a wide array of fuel consuming exotic imported car brands; many beverage trucks with health impeding sugar laden produce; courier vehicles carrying who knows how many Temu packages of junk on their final lap of an obscenely long world long trip from origin; container vehicles carrying hidden and mystery content albeit arguably not always essential, and the ubiquitous side tippers that have morphed from grain carriers to mineral conveyors contributing towards local road surface destruction and the export of our mineral wealth to other corners of the sandpit. I forgive all the beer carrying trucks encountered as beer is essential to life!

Another insightful aspect of a long road trip is observation of the state of small towns (and larger ones for that matter) which one passes through.



One would like to think that human congregations would demonstrate our collective higher intellect and display our bountiful insights into matters resource sustainability and reliance on ecological services. Sadly, this is not to be. The swaths of plastic litter blowing in the wind as one nears towns (and rest stops) is the first clue that one's best expectations are not going to be met. The decrepit state of infrastructure in some towns and the general lack of care and pride is another compelling clue implying that our species is just not grasping the concept and requirements of being an apex being. Lack of regard towards other life forms, single use, over consumption, and immediate self-gratification appear to be our drivers rather than an instinct to preserve and sustain resources.

All this said, a long road Cape road trip provides its rewards as well. For instance, one observes farms and areas on route where care and nurture is clearly the norm. Salt of the earth individuals are encountered, more often than not, and who offer hope that all is actually not yet lost! With one's cell phone lacking wi-fi connectivity and not offering constant distraction, one can contemplate the extent and silence of the Karoo, appreciate the hospitality of guest house hosts and enjoy the raw experience of travel, albeit more frenetic than in days of old.

As foresters, many of us are fortunate to have access to spaces less frequented by people. Entering an environment such as the Cape peninsular with its high density and busy population can by contrast be an unnerving experience. Busy traffic, shoulder to shoulder contact with others, dearth of easily accessible open space and high-density infrastructure, drives home just how dominant humans have become in terms of numbers and arguably how less astute we have become regarding matters sustainability.

Our sandpit is really becoming full, cluttered, dirty and fresh unimpeded resources are becoming ever more difficult to find. How much longer can we carry on in the manner we are currently?

I'm really grateful that my recent road trips unlocked a thought process regarding matters ecological sustainability. I wish that more people encounter a similar unlocking and share their contemplative findings with others. As foresters I hope that we are

generally more inclined to be concerned about sustainability but, I do know from own experience, that we, are just as susceptible to ignorance and inaction as the rest.

Just shy of my road trip I must confess that I placed my first ever *Temu* order! So, I admit that I too am complicit in ordering cheap Chinese trinkets from China and having them flown literally across the world to a central South African airport and being transferred from there, by road literally to my doorstep. How easy it is to be drawn into the overarching human psyche! We place *Temu* orders, we celebrate the new cell phone that we get every two years and the fancy car that we replace every three years. All the groceries we buy, consume, and discard, are conveniently wrapped in single-use plastic. The journeys we undertake are invariably single person events and arguably could have been avoided altogether.

So, is all lost? From both good and bad road trip related observations, my personal conclusion is that all is not necessarily lost at this point. Humankind though, is definitely on a slippery slope and will not maintain current wasteful trajectory for that much longer. If more people took time to contemplate this and adjust their lifestyles and demands accordingly, even marginally, the steepness of slippery slope may start to decline slightly. The career that we have chosen lends itself to such contemplative activity.

My call therefore is that we don't take our life experience at face value and accept such as the norm. Take time to actively switch off influencing layers for a while and look at the world from a different perspective. I'm sure that you will unearth some unexpected and valuable insights that will make your life and contribution easier to understand and conceptualise.

You and I may not be able to change the world, or wind back the time on the ecological clock, but we can certainly claim an intellectual advantage over the others and live a better and responsible life for no other reason than it simply being the right thing to do.

No one may thank us, but we will know we are on the correct path and that is really all that is important!

Athol Fugard, one of my favourite authors and play-



wrights, recently passed away and as a tribute to him I quote from a letter he wrote many years ago to a journalist friend of his.

He summed up the sentiment that I have tried to convey herein in the following manner:-

"...have courage, take care, and be reverent of all life."



Southern Forests – highlights for 2024

By Dave Everard

Southern Forests: a Journal of Forest Science is a niche journal dedicated to publishing scientific and management articles that are of interest to the South (tropics and the southern hemisphere). It is recognised that the journal wishes to promote forest science from the developing world. This niche comes with both some important benefits but also with some disadvantages. The benefits are that it provides a Journal for both experienced and emerging forest scientists from the developing world to publish work that is of importance to this region. It also helps the developing world and South Africa to make its mark in the wider scientific community.

One of the disadvantages is that the impact factor is not as high as some of the prestigious international journals and so the top papers are often submitted elsewhere.

In 2024 we received 150 new submissions from 25 countries, with most coming from Brazil (28%) and South Africa (20%). We also received 55 revised submissions meaning that 205 manuscripts were processed in one way or another. Many of these are still in review or are undergoing further revision, but in 2024 four issues of the journal were published containing 29 papers overall. The overall acceptance rate of submissions is 30%.

An important question that affects the journal is: "How many times are the published papers read and how many times are they actually cited in other publications?"

Well, these statistics are measured, with the most read paper being viewed many thousands of times and the most citations of a paper published in Southern Forests being 187. Of the papers published in 2024, one has been viewed 305 times but only 6 have been cited at this stage, but it is still early days.

Currently the Impact Factor (IF) of the Journal is 0.7. The impact factor is an index that measures the average number of times a paper published in the Journal is cited in another publication over the last 2 years. A high IF shows that papers are used and cited frequently in the scientific literature, thus the journal is having an impact. Is an IF of 0.7 good or bad? Well, it is a little below the average for all journals and ideally, we would like it to get to 1 and above, which it has been in the past. The only way to achieve this is to publish good papers that advance forest science and so are cited. With this in mind, we have to delicately balance the aims of the journal by providing opportunities for scientists from the south to develop and make an impact and publishing good forest science.

Dr David Everard

Editor-in-Chief, Southern Forests: a Journal of Forest Science



Welcoming Dr. Ratsodo Phillip Tshidzumba as SAIF Branch representative for Mpumalanga

After a long period of not having a Branch chairperson for the Mpumalanga Branch of the Southern African Institute of Forestry, it gives me great pleasure to announce that Dr. Tshidzumba after being approached by the SAIF President Bruce Talbot, agreed to fulfill this very important role. He indicated that he is looking forward to engaging in this role and reviving the interest and growing SAIF membership in Mpumalanga.

Email: Ratsodo.Tshidzumba@ump.ac.za

Website: www.ump.ac.za



Earth Day 2025



Purpose : Earth Day serves as a reminder of the interconnectedness of all living things and the planet's ecosystems, emphasizing the need for responsible stewardship of the environment .

Earth Day, celebrated annually on April 22nd, is a global event that highlights the importance of environmental protection and conservation. It's a day for individuals, organizations, and governments to come together and take action on environmental issues, raise awareness, and promote positive change. In South Africa, Earth Day is observed with various events and activities, including rallies, conferences, and service projects, all aimed at raising awareness and inspiring action.

'Our power, Our planet'

The theme for Earth Day 2025 is 'Our power, Our planet', which focuses on renewable energy. The organisers are calling for renewable energy generation to be tripled by 2030 around the world.

LIGNA 2025

Date: 26 – 30 May 2025

Location: Hannover, Germany

More Info: [LIGNA 2025](#)



Elmia Wood

Date: 5 – 7 June 2025

Location: Bratteborg, Sweden

More Info: [Elmia Wood](#)



Sappi Southern Africa launches 2024 Corporate Citizenship Report.

Durban, 16 April 2025

Gaining momentum on our sustainability journey

Sappi Southern Africa is proud to unveil its latest Corporate Citizenship Report, themed 'Gaining Momentum', reflecting the strides made in its sustainability journey. The report showcases impactful initiatives, success stories, and partnerships that highlight Sappi's unwavering commitment to the 9 prioritised Sustainable Development Goals (SDGs), advancing a Just Transition and promoting inclusive economic growth and environmental stewardship.

As a vital contributor to the South African economy and an anchor tenant in rural communities, Sappi's sustainability efforts span multiple dimensions.

Highlights include:

Pioneering climate action: Through climate-smart forestry and responsible land management, Sappi has achieved remarkable progress in biodiversity enhancement, surpassing its strategic target with a 13% improvement in Important Conservation Areas (ICAs).

Conserving biodiversity: Protecting 38,320 hectares of grasslands, wetlands, and forests, supporting critical biodiversity, including endangered species like the Long-toed Tree Frog.

Empowering communities: Initiatives like Sappi Khulisa have uplifted over 4,000 small-scale growers, contributing over ZAR332.6 million to rural communities in 2024 alone. The Sappi Enterprise Supplier Development (ESD) programme ensured a procurement spend with SMEs amounting to over ZAR372 million and sustaining 1,502 jobs.

Driving renewable energy: With 53% of energy sourced from renewables, and innovations like a 175 GWh renewable energy partnership and the Ngodwana Energy biomass project, Sappi continues to lead in advancing SDG7: Affordable and Clean Energy.

Championing education: Through Early Childhood Development programmes, digital literacy, and

vocational training, Sappi addresses inequalities in the education system, empowering youth with tools to thrive in a green economy, aligned with SDG4: Quality Education.



Sappi's contribution to education in schools

Promoting circularity: By transforming woodfibre into versatile, biodegradable products and reducing landfill waste by 44% over five years, Sappi is advancing SDG12: Responsible Consumption and Production.

This year's report marks a significant milestone, as it is the last published under the leadership of Alex Thiel, outgoing CEO of Sappi Southern Africa. Reflecting on his tenure, Thiel shared, "Leading Sappi Southern Africa has been an extraordinary privilege. The achievements in this report are a testament to our team's resilience, innovation, and commitment. I hand over the reins to Graeme Wild, confident in the bright future ahead."

Newly appointed CEO Graeme Wild, poised to steer Sappi Southern Africa into its next chapter, expressed his vision for continued progress: "With the foundation laid by Alex, we aim to build greater momentum, harnessing the value of trees to create sustainable products that drive the circular economy. Together, as OneSappi, we will champion excellence and collaboration to ensure lasting impact."

The Corporate Citizenship Report reflects Sappi's legacy of leadership and collaboration, driven by innovative solutions and partnerships with organisations like WWF-SA, National Business Initiative, and academic institutions. From enabling rural development to producing world-class, eco-certified goods, Sappi continues to exemplify sustainable innovation in South Africa.



Download the Corporate Citizenship Report to explore how Sappi is driving resilience, equity, and shared value: **2024 Sappi Corporate Citizenship Report**

(<https://mediahub.sappi.com/m/7af1e2acee8d6599/original/2024-Sappi-Southern-Africa-Corporate-Citizenship-Report.pdf>)



Alex Thiel handing over the baton as CEO of Sappi to his successor Graeme Wild

About Sappi

Sappi is a leading global provider of everyday materials made from woodfibre-based renewable resources. As a diversified, innovative and trusted leader focused on sustainable processes and products, Sappi is building a more circular economy by making what it should, not just what it can. Its raw materials offerings (including dissolving pulp, wood pulp and biomaterials) and end-use products (packaging papers, specialty papers, graphic papers, casting and release papers, forestry products) are manufactured from woodfibre sourced from sustainably managed forests and plantations. Many of Sappi's production facilities use internally generated bioenergy, enabling many of its operations to be energy self-sufficient.

Sappi produces 5.5 million tons of paper, 2.6 million tons of paper pulp, 1.5 million tons of dissolving pulp per year. Globally, it has over 12,000 employees, 400,000 ha of owned and leased sustainably managed forests in South Africa. Sappi has manufacturing operations in three continents and sells its products in more than 150 countries.

<https://www.sappi.com>



Sappi Southern Africa

NMU Researcher Sheds Light on Which Plants Fuel Wildfires and How To Protect Your Home



Choosing the right plants and getting rid of certain species can go a long way in protecting you and your home from the threat of wildfires, according to a study by NMU researcher Samukelisiwe Msweli.

Eastern Cape, South Africa (05 March 2025) – Wildfires are a devastating force of nature that sweep across various parts of our country. Yet, within this challenge lies ways to protect yourself and your home.

Thanks to a groundbreaking study by Nelson Mandela University researcher Samukelisiwe Msweli, we're gaining a vital understanding of how to better manage these fires.

Her study sheds light on the hidden dangers within our gardens, revealing which plants ignite with alarming speed and intensity, making fires more destructive.

The findings provide crucial insights that can help homeowners, urban planners, and environmental managers make informed decisions about landscaping and fire prevention by simply choosing or avoiding certain plants.

According to Msweli, by understanding the fire risks of different plant species, communities can take decisive preventative action, transforming potential tragedy into proactive preparedness – avoiding future disasters such as the heart-wrenching Garden Route fires of 2018, where lives were tragically lost.

Msweli found that in the Garden Route there are highly flammable plant species that significantly increase wildfire risks. With this knowledge, residents in the areas can recognise these shrubs and trees



from their own gardens or surrounding areas and protect themselves by removing them.

According to NMU, she assessed the flammability of 30 woody species, many never studied before. It showed that invasive species such as pine, gum and wattle pose particularly high fire risks due to their rapid ignition and intense burning.

“Wattle not only carries fire but also drains water from the soil, and it is not indigenous to this area,” Msweli explained.

“The high fire risk posed by these species needs to be considered in planting decisions and invasive plant-clearing efforts.”

However, there’s a silver lining. Native thicket species in the region prove to be less flammable, offering a safer, more harmonious alternative for fire-conscious gardeners and planners.

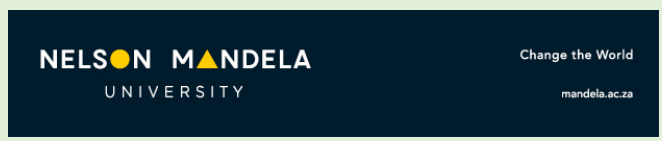
Msweli suggests simple steps such as choosing the right plants, keeping gutters clean of dry branches, sweeping up dry leaves, and maintaining a clear space around homes to help protect property and lives.

This work aims to integrate plant flammability insights into wildfire management strategies, helping communities better prepare for fire threats.

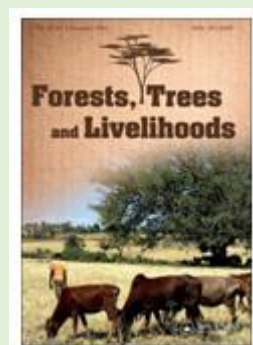
“Fire isn’t always the enemy – it is part of nature,” she said.

“Fire has its uses but we need to learn how to live with it safely.”

By applying these findings, she hopes that communities can reduce fire hazards and protect both human life and biodiversity in the Garden Route and beyond.



Forests, Trees and Livelihoods



Forests, Trees and Livelihoods originated in 1979 under the title *International Tree Crops Journal* and adopted its new name in 2001 in order to reflect its emphasis on the diversity of tree based systems within the field of rural development. **Forests, Trees and Livelihoods** is a peer-reviewed international journal publishing comments, reviews, case studies, research methodologies and research findings and articles in this general field in order to promote discussion, debate and the exchange of information and views in the main subject areas of:

- Economic and social importance of trees outside forests and forests - including their cultural significance, potential for enhanced livelihood benefits and the alleviation of poverty;
- Non timber forest products and the various ecosystem services derived from trees outside forests and forests, at various spatial scales;
- The management of forests and trees outside forests, for enhanced livelihood benefits - including indigenous tree and forest management systems;
- The role of trees outside forests and forests in a context of change, including mitigation of and adaptation to, climate change;
- Policies and institutional issues related to rural development forestry and agroforestry, including policy implementation.

The Editor encourages submission of sets of manuscripts for Special Issues focusing on one or another of the above subject areas.





Photo of burnt Willowmore Cedar on Leopard Trail in Baviaanskloof

Derivation of name and historical aspects

The genus *Widdringtonia* was named after Edward Widdrington, a Royal Navy captain and a conifer botanist of the late 1700s and early 1800s. The species name of *schwarzii* was named for Friedrich (Fritz) Schwarz, 20th century cactus collector. There are 2 other species in this African genus, [W. cedarbergensis](#) and [W. nodiflora](#).

Uses

The wood is pale yellow, aromatic, remarkably durable and resists decay. It was a popular wood for building and was used for almost all the woodworking needed by the early settlers in the area, to build houses, fences, telegraph posts and furniture. As it is a slow-growing species, the Willowmore cedar is an ideal subject for a Bonsai specimen.

References

- Coates Palgrave, K. 1977. Trees of southern Africa, edn 1. Struik, Cape Town, Johannesburg.
- Leistner, O.A. (ed.). 2000. Seeds plants of southern Africa : families and genera. Strelitzia 10. National Botanical Institute, Pretoria.

**Carly Cowell Millennium Seed Bank Project
Kirstenbosch National Botanical Garden, April
2007**

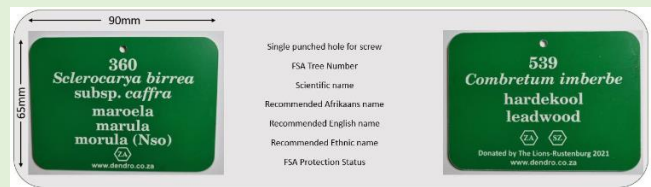
Dendrological Society of South Africa
The tree science and conservation society of South Africa

The Dendrological Society promotes the study, protection and propagation of trees and tree-dominated ecosystems as a contribution to effective environmental conservation and improvement in South Africa. Membership of the Dendrological Society is open to all natural persons whose application is seconded by two members and endorsed by the Executive Committee.



Magazine no 56: March 2025

Tree tags provided by the Society



<https://www.dendro.co.za/>



Georg von dem Bussche as many of us know him asking whether you know the name of this tree species





<https://www.loggingon.net/>

In Logging-on's first issue of April, we examine Tigercat's release of their L857 feller buncher and LH857 harvester, both built on the new sloping tail platform for steep terrain logging. Several significant improvements have been made which take steep slope logging machines to the next level. We look at the Ponsse Greasing System, which is a new optional accessory for Ponsse harvester heads, designed for chainsaw lubrication. The Komatsu C93 harvester head has been updated with a redesigned valve block and improved hydraulics for the feeding system. Volvo have unveiled their world-first electric articulated haulers. Finally, John Deere have introduced new safety and efficiency technologies which are being rolled out for various machines in different parts of the globe.



Forestry South Africa(FSA) : AGM

FSA will hold their Annual Regional Meeting in the Southern Cape at the following venue

FSA Annual General Meeting

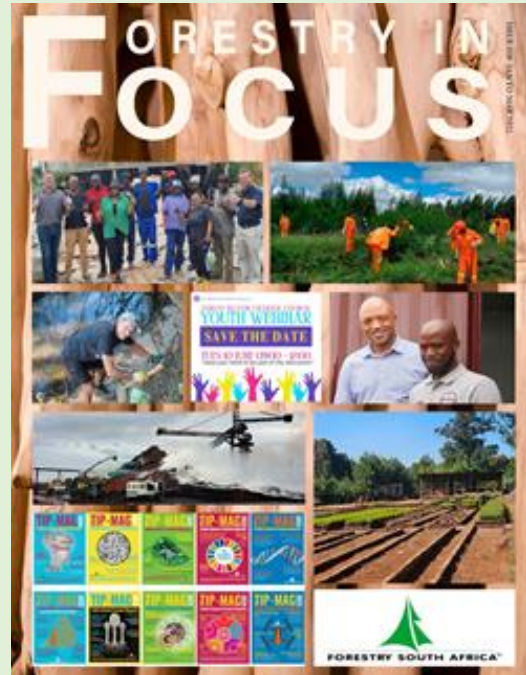
Thursday 22 May at 14:00 – at Fern Hill Hotel & Conference Centre, Tweedie

For more details, please contact Judy at the following address: **JB DOWSETT :PMB Office Manager**

Tel: 033 346 0344; Cell: 084 556 9234

www.forestrysouthafrica.co.za

Forestry In Focus Issue 18 - Welcoming in 2025



www.forestrysouthafrica.co.za

As the first quarter of 2025 rushes past, I'm struck by the remarkable fact that we are now a quarter of the way through this century.

This year marks significant milestones for our Sector, as we bid farewell to some giants of forestry, starting with Craig Norris, whose impactful legacy will be felt by all fortunate enough to have collaborated with him. I wish all those retiring this year a heartfelt farewell and extend my gratitude for their invaluable contributions to forestry.

This issue also includes articles by:

- A new feature - a briefing from the Executive's Desk - where Michael Peter outlines key issues facing our Sector, balancing challenges with triumphs.
- Karin Nagel will share insights from the ICFR, pushing the boundaries of forestry research.
- Stefan Links provides an overview of the Plant Health Act.
- TIPWG's Jacqui Meyer talks Pest Control Operators.
- NCT's Natasha Cluckie discusses forestry and the law.
- Rob Thompson's "Apocalypse Awaits" is a must-read!

And many more!



The 36th Annual Meeting of the Tree Protection Co-operative Programme (TCP) and DSI-NRF Centre of Excellence in Plant Health Biotechnology (CPHB)

The 36th Annual Meeting of the Tree Protection Co-operative Programme



Dear Forestry colleagues,

We will have our annual **TCP Symposium** on **13-14 May 2025** at the Future Africa campus, University of Pretoria, in Pretoria (Tshwane).

We hope to have a strong representation from across the SA forestry community with us to discuss our progress in the past year related to tree health, but also the way forward as a collective. Various national and international visitors linked to forestry research will again join us for the meeting.

This annual interaction is critical for the work we do. It is also an excellent opportunity for networking with others in the forestry community. The annual meeting of the Tree Protection Co-operative Programme (TCP) and DSI-NRF Centre of Excellence in Plant Health Biotechnology (CPHB) has become one of the most important meetings relating to forest tree health in South Africa and globally. This event is open to staff of member companies of the TCP and other stakeholders in the TCP and CPHB.

As has been the case in the past, the 36th annual meeting of the TCP will focus on key issues relating to forest tree health in South Africa. Importantly, the meeting will again seek to provide feedback to forest industry and other stakeholders on programmes focused on dealing with threatening pest and disease problems following an integrated pest management approach.

Best regards, Bernard

Registration information

You can register here or send Madelein van Heerden (madelein.vanheerden@fabi.up.ac.za) via email or via the following link:

<https://www.fabinet.up.ac.za/index.php/event/TCP-CPHB-2025/>

WoodEX for Africa : 18 – 20 June 2025



GALLAGHER CONVENTION CENTRE | JOHANNESBURG
| SOUTH AFRICA

WoodEX for Africa is recognised as the premier event and key gateway for machinery, tools, forestry, and timber supplies across southern Africa. The event will be held at Gallagher Convention Centre in Johannesburg, South Africa, from 18 – 20 June 2025.

As a vibrant and highly profitable platform within Africa, WoodEX for Africa enables valuable connections between trade and industry professionals and specialized dealers. It allows participants to stay at the forefront of the latest industry trends and innovations, establish new business contacts, and compare the best deals in the timber trade. Since its debut in 2012, WoodEX for Africa has shown consistent and strong year-on-year growth. The event has attracted a growing African visitor demographic, making up a significant portion of the international trade visitors attending the expo.

CO-LOCATED with **BIG 5 Construct South Africa & African Smart Cities**

WoodEX for Africa will collaborate with Africa's largest construction expo, Big 5 Construct South Africa, for the fourth time to present the ultimate industry-focused trade expo in Southern Africa in 2025. Big 5 Construct South Africa offers a distinctive platform for engaging with key industry stakeholders and conducting valuable business. construction, and overall construction.

VISITOR PROFILE

As the largest timber trade exhibition on the continent, WoodEX for Africa is considered the gateway to Africa's timber trade.



SAIF Contact Details

| | Name | Email |
|----------------------------|--------------------------|------------------------------------|
| President | Prof. Bruce Talbot | president@saif.org.za |
| Vice-president | Dr. Christopher Komakech | christopher.komakech@gmail.com> |
| Past-president | Braam du Preez | past-president@saif.org.za |
| National secretary | Ms. Intsia Kriel | admin@saif.org.za/ saif@mweb.co.za |
| SF Journal Editor | Dr. David Everard | drdavideverard@gmail.com |
| KwaZulu-Natal | Lelethu Sinuka | kzn@saif.org.za |
| Gauteng | Vacant | gauteng@saif.org.za |
| Mpumalanga | Dr. Ratsodo Tshidzumba | admin@saif.org.za |
| Southern Cape | Dr. Tatenda Mapeto | southern-cape@saif.org.za |
| Western Cape | Dr. Justin Erasmus | western-cape@saif.org.za |
| DFFE representative | Vacant | |

—



The following members have celebrated their
birthdays in April



APRIL BIRTHDAYS

| | | | |
|--------|-----------------------|--------|--------------------|
| 08 Apr | MICHAL BRINK | 21 Apr | ERWIN LOUW |
| 08 Apr | LEM LE ROUX | 22 Apr | POLLA DU PLESSIS |
| 11 Apr | MIKE NORRIS-ROGERS | 24 Apr | MICHIEL BRITZ |
| 13 Apr | GEORG VON DEM BUSSCHE | 24 Apr | ANDRE DE WET |
| 16 Apr | BRUCE TALBOT | 25 Apr | MIKE HUNTER |
| 16 Apr | REVOCATUS MUSHUMBUSI | 25 Apr | SHARMANE NAIDOO |
| 17 Apr | MAARTEN GROBBELAAR | 26 Apr | JAMES VAN ZYL |
| 19 Apr | GARY OLSEN | 26 Apr | PHILLIP TSHIDZUMBA |
| 20 Apr | NIC MOSTERT | 27 Apr | THEUNISSEN RABIE |
| 21 Apr | MIKE WINGFIELD | 28 Apr | MICHELLE SCHRODER |
| 21 Apr | JOHANN EDELSBACHER | 28 Apr | TRACY LE ROUX |



The following members will be celebrating their birthdays in May

happy birthday



MAY BIRTHDAYS

| | | | |
|--------|-----------------------|--------|-------------------|
| 02 May | LOUIS DU PLESSIS | 19 May | KLAUS VON GADOW |
| 05 May | ARIE BIJL | 20 May | BERNARD SLIPPERS |
| 05 May | COLIN SUMMERSGILL | 21 May | RIAAAN SCHOOMBEE |
| 06 May | KEVIN CAZALET | 24 May | BEN DU TOIT |
| 06 May | DAVID EVERARD | 24 May | BILL ESLER |
| 07 May | MEYER PRETORIUS | 27 May | WALDO HINZE |
| 07 May | LEESHAN MAHADEO | 27 May | PATRICK KIME |
| 11 May | BATHANDEBONKE KHUMALO | 27 May | WESLEY NAIDOO |
| 12 May | RIAAAN FERREIRA | 28 May | BEN VAN HEERDEN |
| 13 May | FRANCOIS OBERHOLZER | 29 May | TONY BOLD |
| 14 May | DAVID DREW | 29 May | AYABONGA STEMELE |
| 16 May | GUNTER GERISCHER | 30 May | NICOLAAS HATTINGH |
| 17 May | BRAND WESSELS | 31 May | GLENN SIMPSON |
| 18 May | CLIFF WALTON | | |

The SAIF would like to wish every member who celebrate their birthdays in April and May , a very Happy Birthday and congratulations with reaching another milestone. Thank you for your continued support and God bless for the next year ahead.





The Southern African Institute of Forestry

Handbook order form

The Southern African Institute of Forestry publishes three industry specific handbooks.

I would like to order:

South African Forestry Handbook

Price: SAIF members: R400

Non members: R500



Fire Manager's Handbook on Veld and Forest Fires

Price: SAIF members: R300

Non members: R400



There's Honey in the Forest

Price: SAIF members: R100

Non members: R150



International orders must contact the Secretariat for a quote due to currency and postage fluctuations.

A bulk discount of 10% applies on orders of 10 or more copies.
Price includes VAT.

An extra R50 per book will be charged if we need to courier the book to you.

I am a member non-member of the SAIF.

| | |
|----------------|--|
| Name | |
| Company | |
| Postal address | |
| Contact number | |
| Email address | |

Bank details: Nedbank Branch code: 169745 Account: 1697009913 Account name: SAIF

Email proof of payment to: satif@mweb.co.za.

